



# Prairie Moraine County Park

## Vegetation Restoration Goals

- ◆ Park will include three primary natural communities—**Prairie, Oak Savanna/Opening, and Oak Woodland**. Communities will transition naturally into each other providing a seamless landscape that is biologically diverse and offers a varied experience for the park user.
- ◆ Exotic/invasive species will be controlled to prevent them from out-competing native species.
- ◆ Vegetation will allow views of significant geologic features, underlying terrain, and scenic vistas.
- ◆ Vegetation will assist in the prevention of soil erosion to protect geologic features and biological resources.
- ◆ Vegetation will provide habitat for wildlife and viewing opportunities for park visitors, including rare and sensitive species that have been declining regionally.
- ◆ Shade and specimen trees will remain at periodic locations along trails and gathering points to provide shelter for park users and dogs.

### Vegetation Restoration Methods Used



Invasive tree and shrub removal



Prescribed burning



Weed control



Planting Native Vegetation

### Examples of Invasive Species at Park



Honeysuckle



Buckthorn

### Examples of Native Species at Park



Pale Purple Coneflower

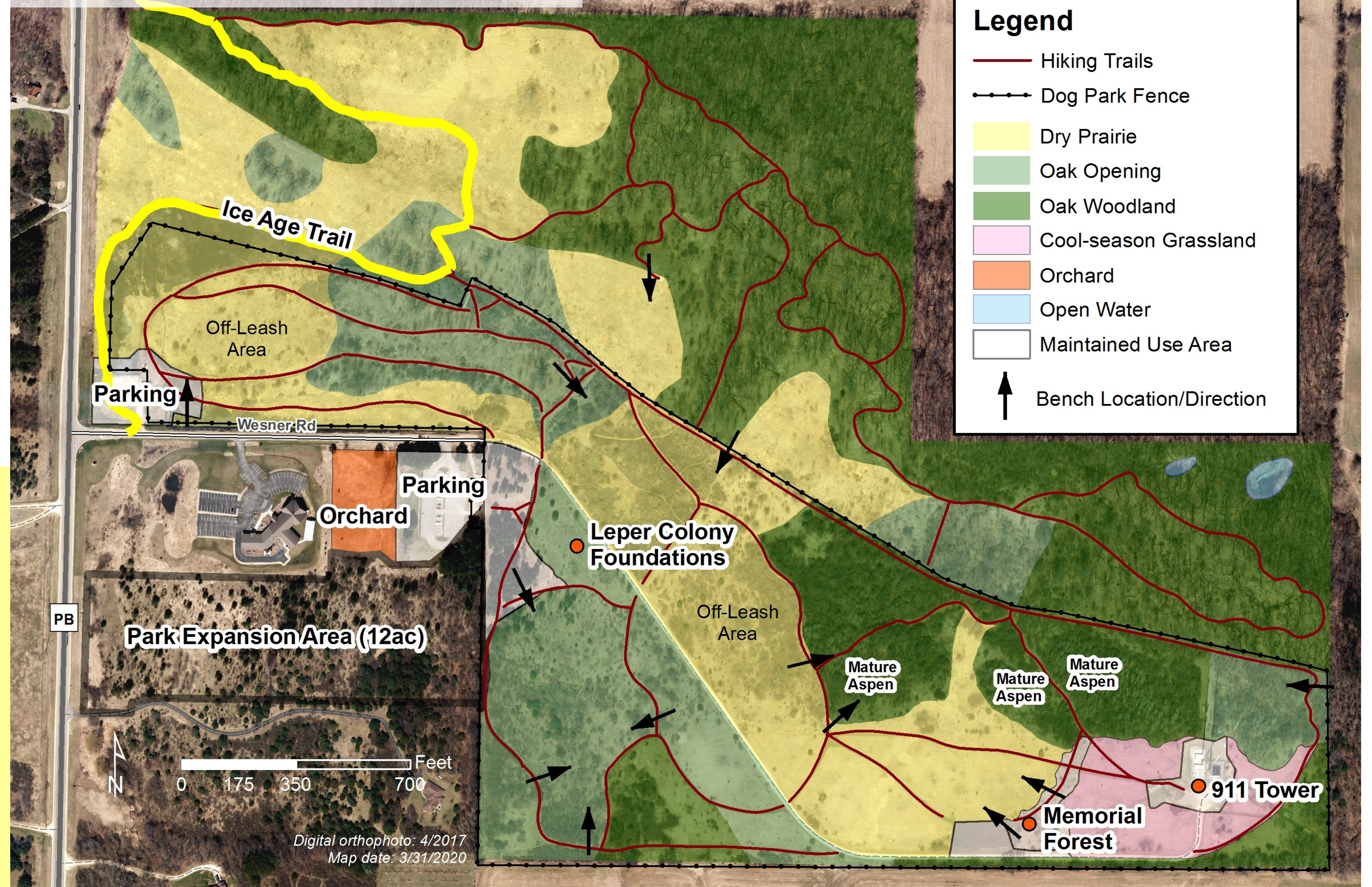


Bur Oak



Spiderwort

### Target Vegetation Community Types



Legend	
	Hiking Trails
	Dog Park Fence
	Dry Prairie
	Oak Opening
	Oak Woodland
	Cool-season Grassland
	Orchard
	Open Water
	Maintained Use Area
	Bench Location/Direction

PRAIRIE



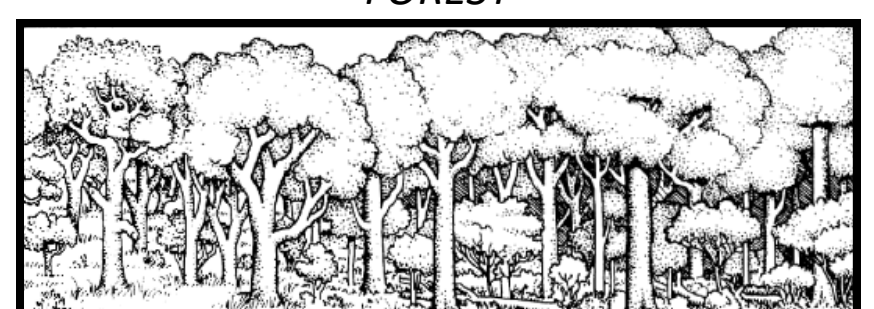
OAK OPENING/SAVANNA



OAK WOODLAND



FOREST



Illustrations from *The Tallgrass Restoration Handbook*, Stephen Packard and Conelia F. Mutel, 1997