



GLACIAL DRUMLIN TRAIL PHASE 1

WISDOT ID # 5992-10-48/50
(IH 90 – CTH AB)

PUBLIC INFORMATION MEETING
JULY 16, 2025



Meeting Overview



- Presentation
 - Introductions
 - Project Overview
 - Project History
 - Route Overview
 - Phase 1
 - Project Timeline
- Q&A – at stations around the room



Introductions



DAN SCHMITT,
Senior Landscape Architect,
Project Manager,
Dane County Parks



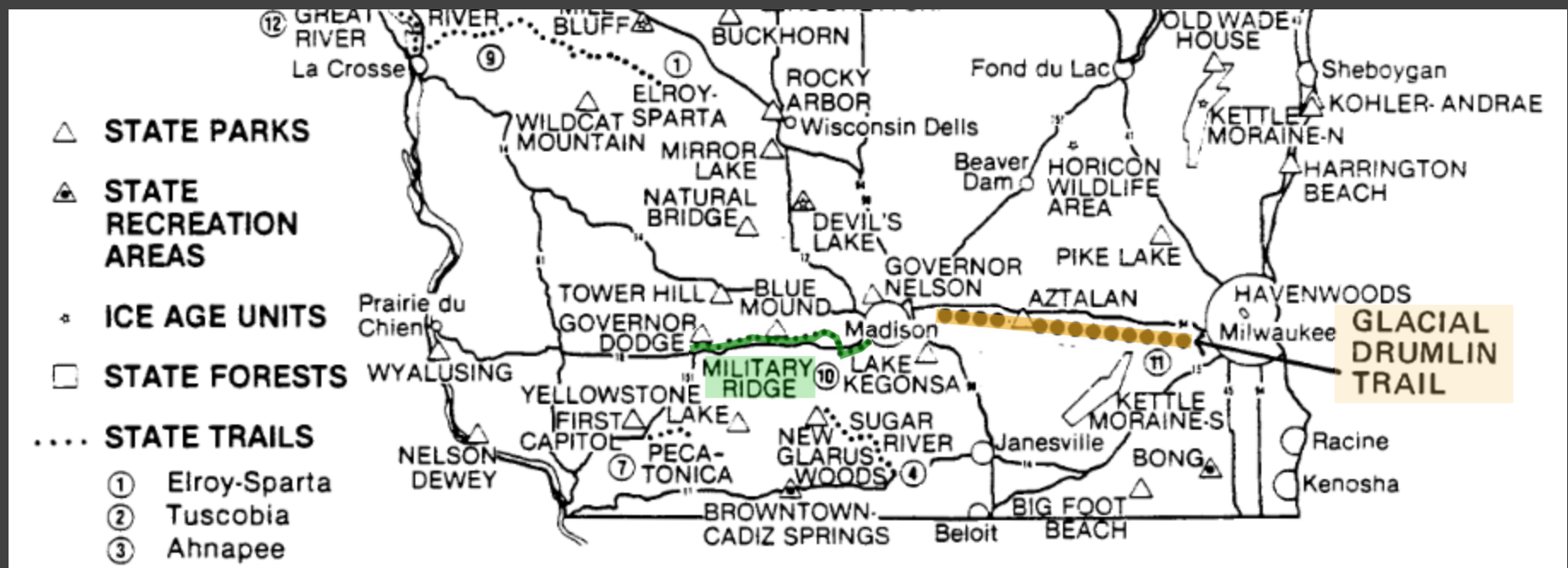
ALEX DESMIDT,
Park Planning Manager,
Dane County Parks



JESSICA LEWIS,
CORRE Project Manager



PROJECT OVERVIEW



1987 WIDNR Trail Master Plan



Project History



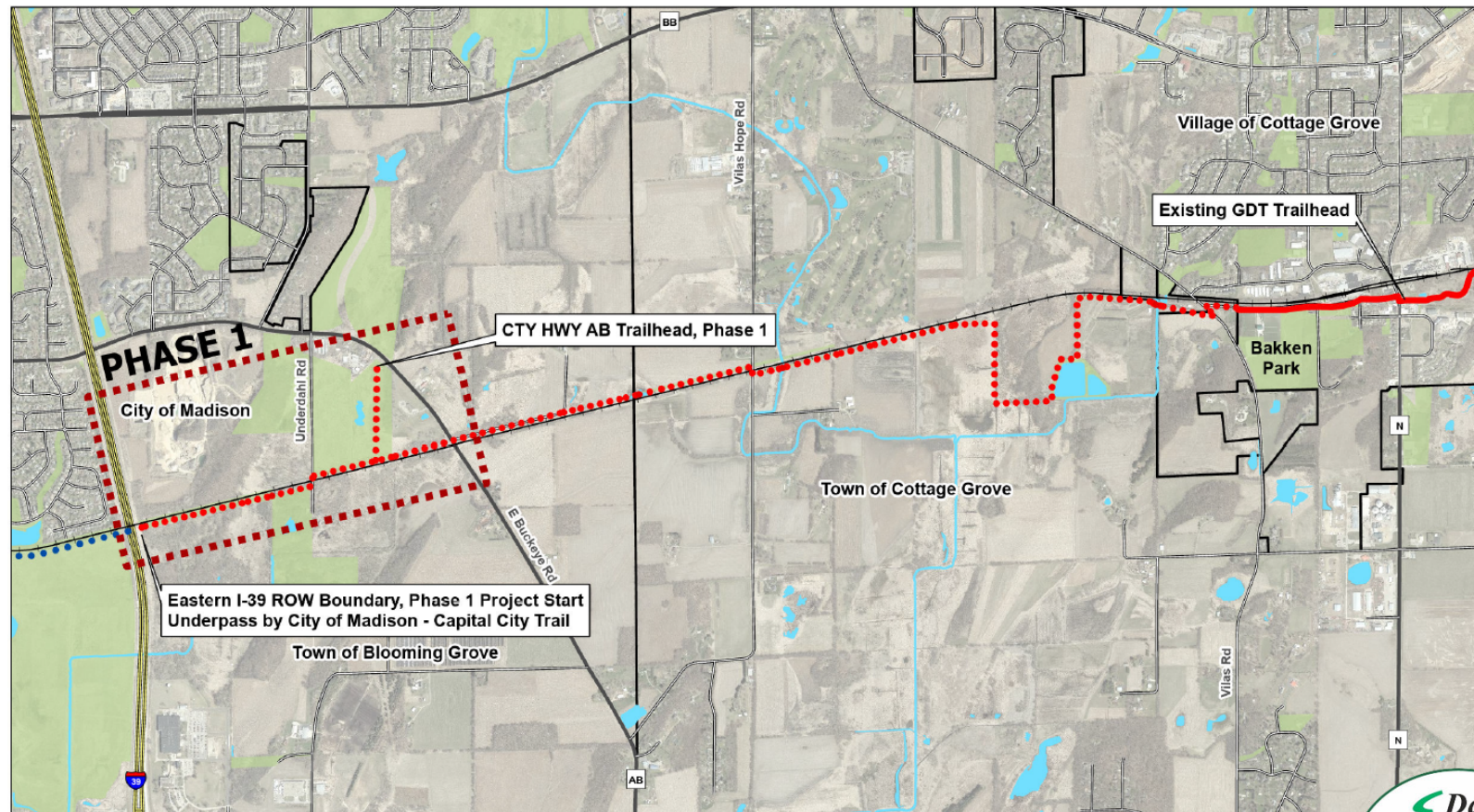
- **1987:** Master plan for Glacial Drumlin State Trail.
- **1997:** Cities of Madison, Fitchburg, Dane County, and WIDNR entered into partnership agreement for development of Capital City Trail.
- **1998-2011:** WIDNR acquired land/easements for GDT from Cottage Grove to Madison.
- **2010:** Wisconsin Bike Federation secures Federal Earmark Grant for completion of Glacial Drumlin Trail (GDT) from Village of Cottage Grove to Capital City Trail (I-90/I-39 bridge).
- **2011:** Dane County/WIDNR sign agreement for completion of GDT.
- **2017:** Preliminary design starts on the final segment.
- **2023:** Design proceeds for Phase 1 of the final segment.
- **Fall 2023:** \$7,224,360 STP-Urban Funds awarded to WisDOT for project construction.
- **Summer 2025:** Additional \$932,397 STP-Urban Funds awarded to WisDOT.



Glacial Drumlin Trail: I-39/90 to Vilas Rd: Project Overview



Glacial Drumlin Connector Trail: Project Area Overview Map



Map created: 11/16/2015
Map edited: 12/11/2024
Not to Scale

Legend

..... Proposed Trail Alignment;
Exact alignment to be determined

.... Connector trail by City of Madison

— Existing Glacial Drumlin Trail





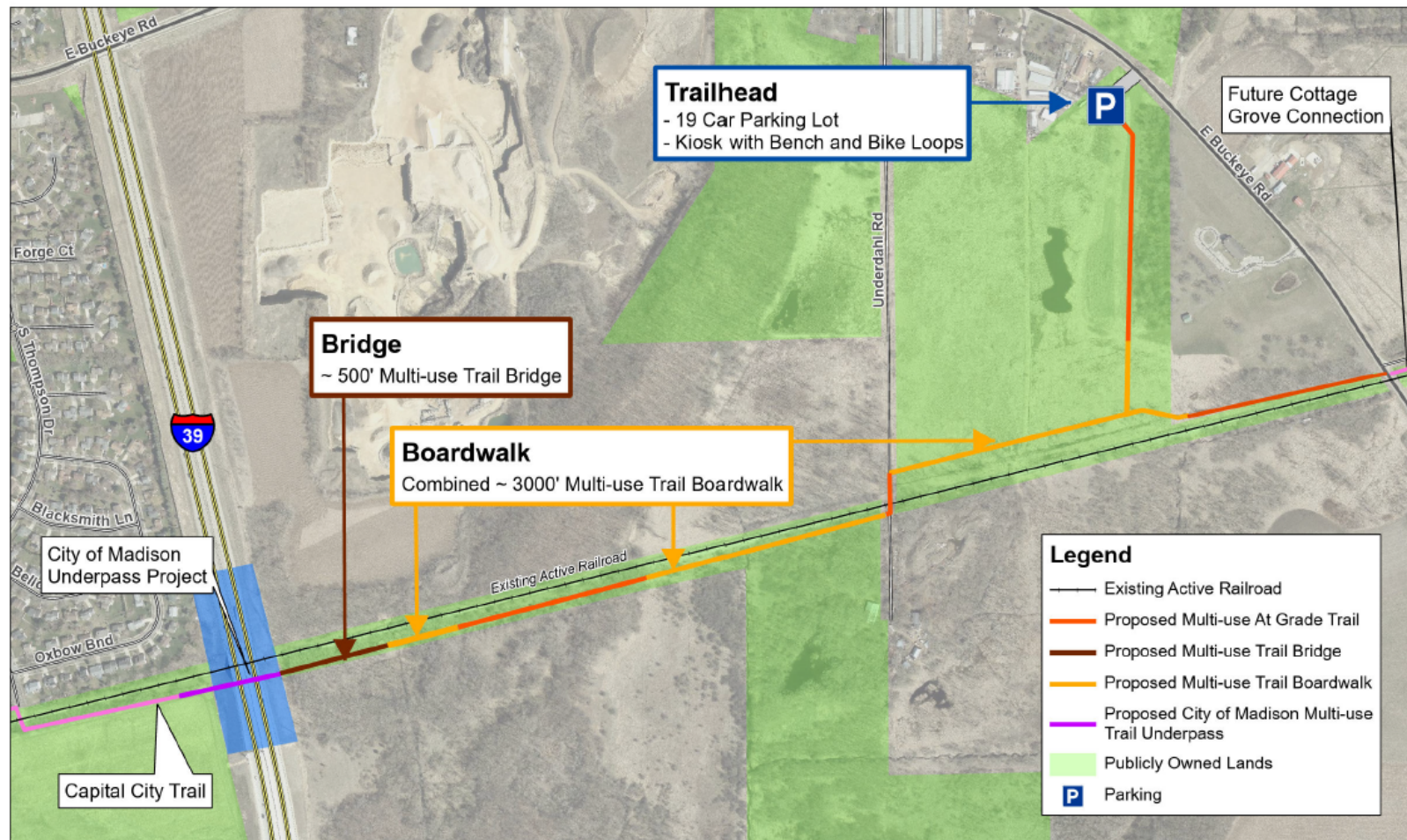
Phase 1 Key Design Components

Project Goal – Create a Safe off-road trail connection from the Capital City Trail to the proposed trailhead on CTH AB.

- **1.5-mile trail** combination of asphalt pathway, bridges, and boardwalks.
- Includes **improving at-grade railroad crossing** for bicycle/pedestrians.
- Crosses extensive **wetlands, drainage-ways, and ROW**.
- Utilize existing **WIDNR owned land and easements**.
- Coordination with existing **underground utility easements**.
- Coordination with concurrent **City of Madison Capital City Trail Project**.



Glacial Drumlin Trail Phase 1: I-39/90 to CTH AB Project Overview

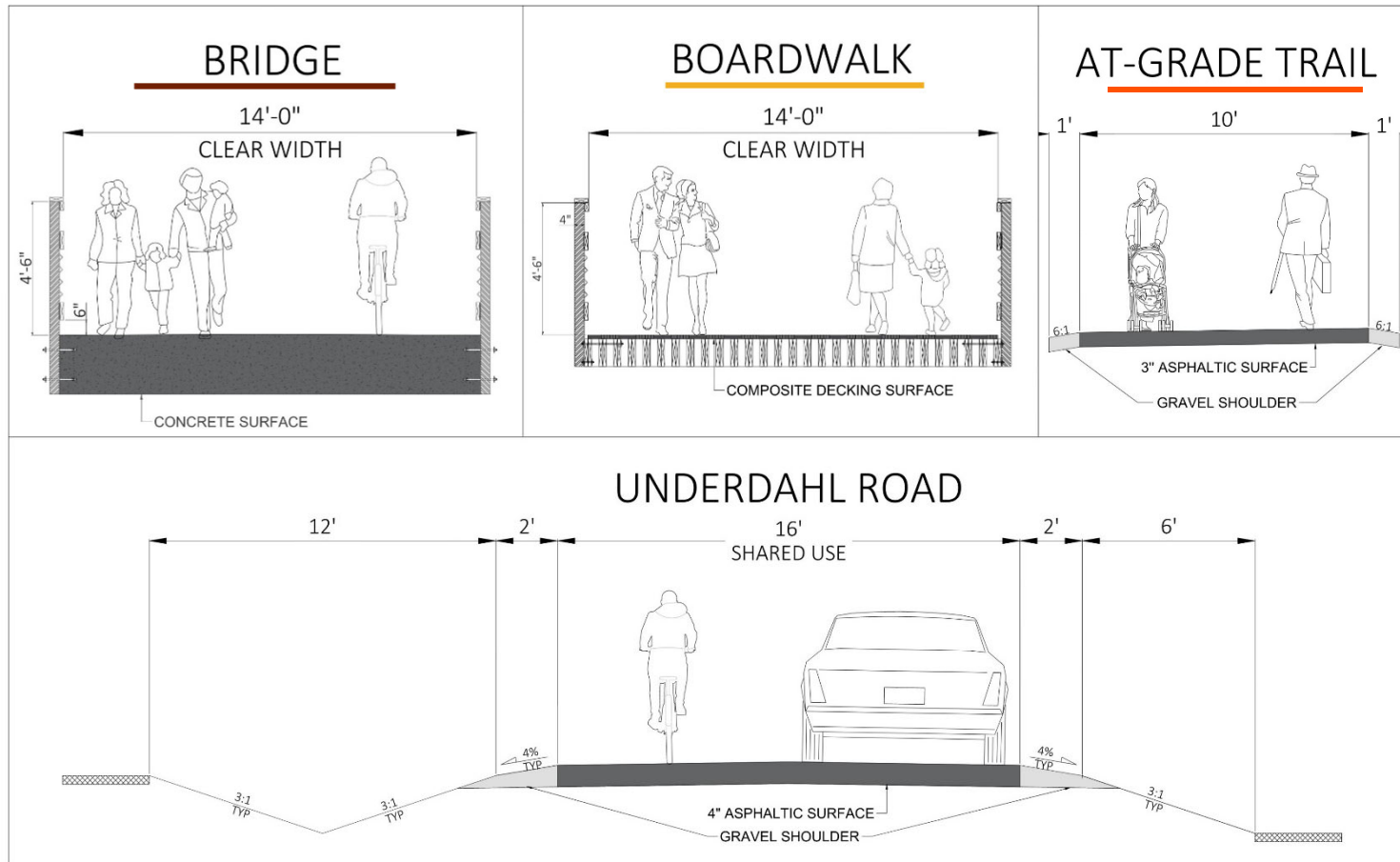


Glacial Drumlin Trail - Capital City Trail Connection - Phase 1

Document Path: H:\Parks\Mapping\TrailsLand\GDTtoCCT\Maps\GDT-CCT Connection Map\GDT-CCT Connection Map.aprx 12.12.2024



Typical Trail Conditions



DANE COUNTY PARKS

PUBLIC INFORMATION MEETING - PROPOSED TYPICAL SECTIONS
GLACIAL DRUMLIN TRAIL

07/16/2025

Glacial Drumlin Trail (#5592-10-48/50) Public Information Meeting



Project Timeline



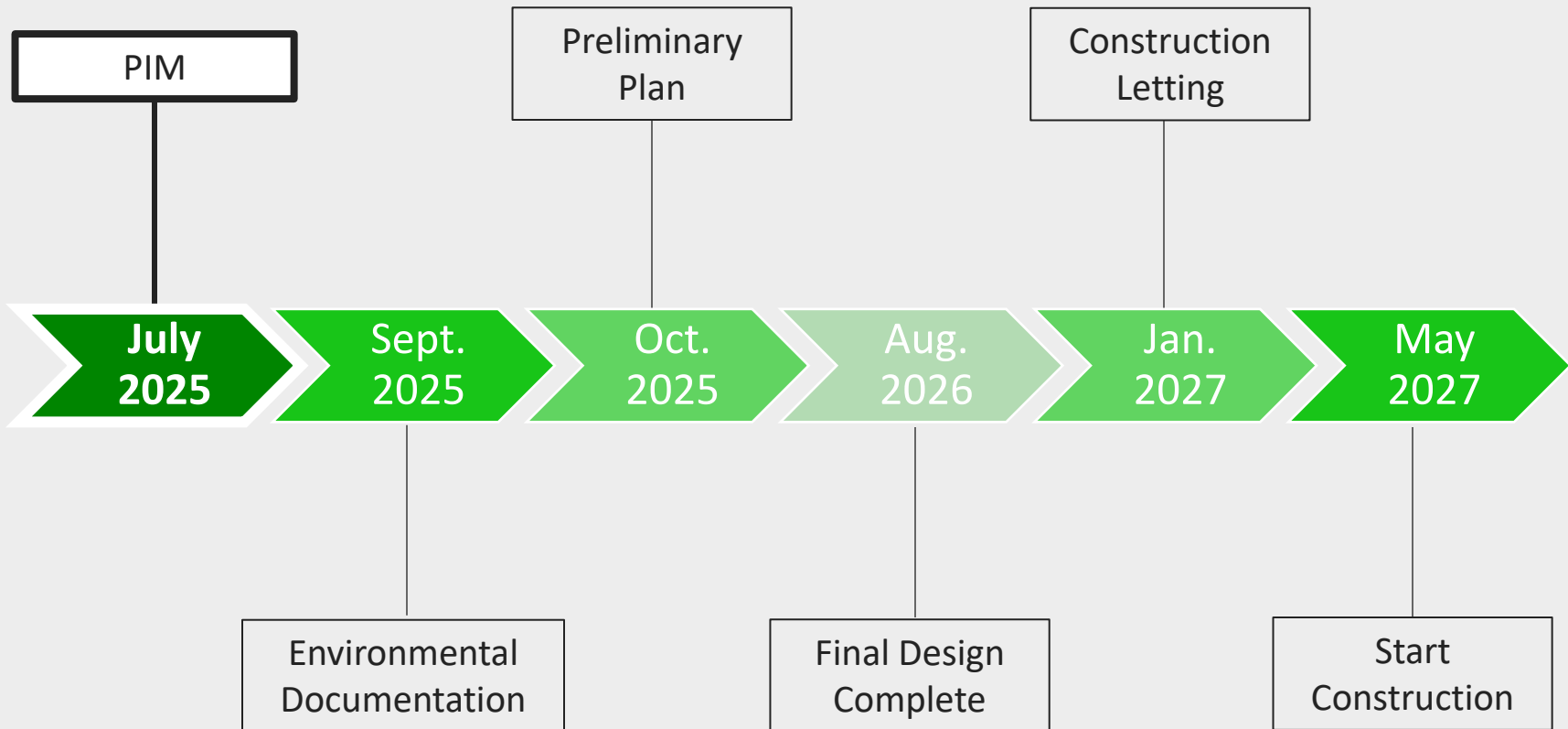
General Timeline Considerations



- WisDOT/Local project = specific reporting/process requirements with FHWA (environmental, design, real estate)
- Assures final design balances minimization of environmental impacts and real estate needs, meeting all design requirements, constructability, and cost
- Significant permitting and approvals for environmental aspects (FHWA, WisDOT, ACOE, and WisDNR)
- Critical timing for approvals for permitting, approvals for improvements to RR crossings & securing any real estate



Project Timeline



How to Provide Comments



- Submit comment form, available tonight (or by email or mail)
- Submit comment online:
<https://www.danecountyparks.com/Forms/Glacial-Drumlin-Trail>

City of Madison Capital City Trail

Public Information Meeting – August 7, 2025

For more information, visit:

<https://www.cityofmadison.com/engineering/projects/capital-city-path-segment-4-6-vondron-road-to-i-39-90>



Thank You for Attending!



Have questions? Staff will be available at stations throughout the room until **8:30 pm.**

