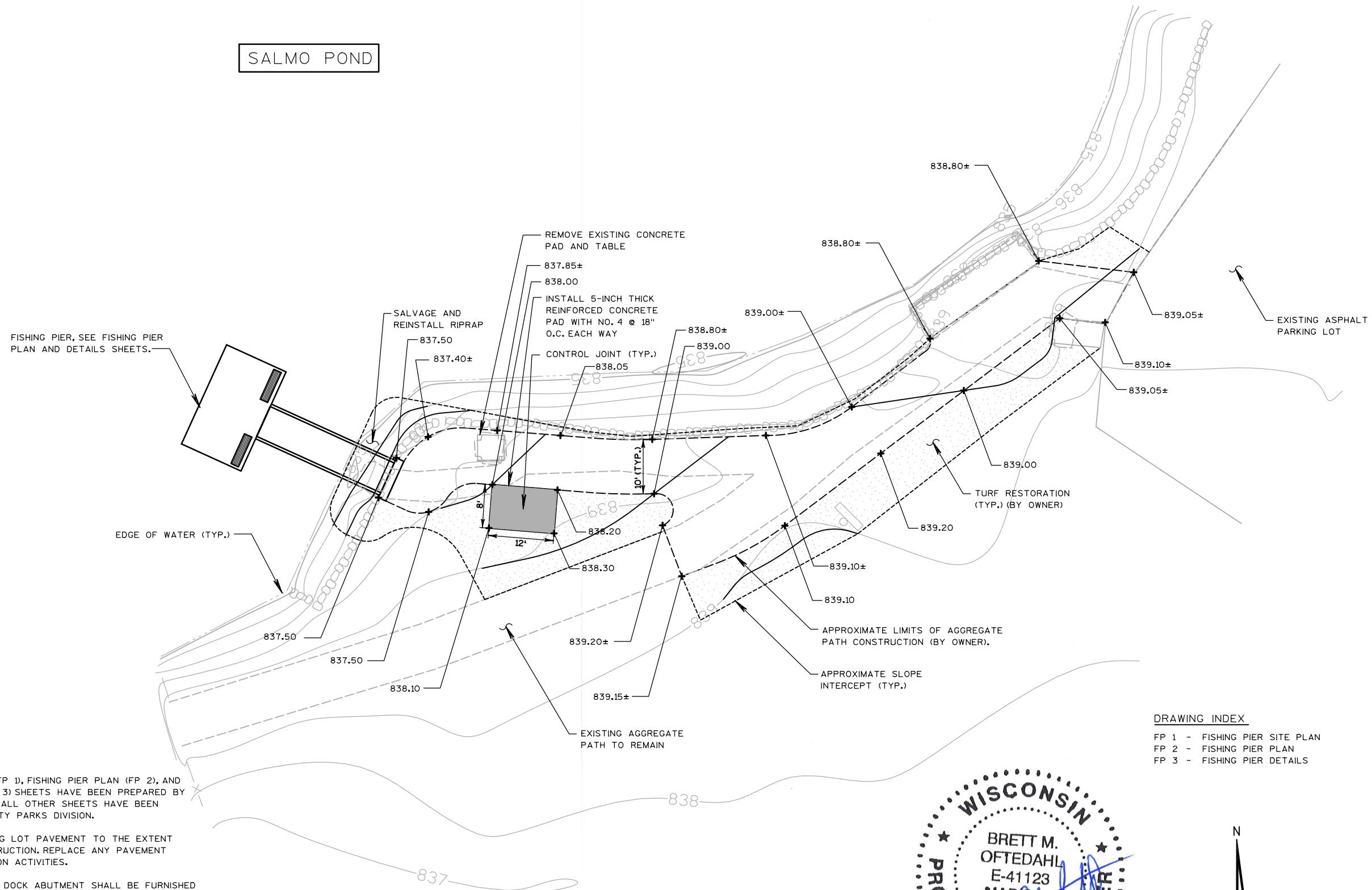


SALMO POND



GENERAL NOTES:

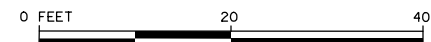
FISHING PIER SITE PLAN (FP 1), FISHING PIER PLAN (FP 2), AND FISHING PIER DETAILS (FP 3) SHEETS HAVE BEEN PREPARED BY STRAND ASSOCIATES, INC. ALL OTHER SHEETS HAVE BEEN PREPARED BY DANE COUNTY PARKS DIVISION.

PROTECT EXISTING PARKING LOT PAVEMENT TO THE EXTENT PRACTICAL DURING CONSTRUCTION. REPLACE ANY PAVEMENT DAMAGED BY CONSTRUCTION ACTIVITIES.

CONCRETE FOR SLAB AND DOCK ABUTMENT SHALL BE FURNISHED AND INSTALLED IN ACCORDANCE WITH WISDOT STANDARD SPECIFICATIONS FOR HIGHWAY AND STRUCTURE CONSTRUCTION (STANDARD SPEC.). CONCRETE CONSTRUCTION SHALL BE IN ACCORDANCE WITH SECTION 502 OF THE STANDARD SPEC. CONCRETE SHALL BE GRADE A-FA. BAR STEEL REINFORCEMENT SHALL BE FURNISHED AND INSTALLED IN ACCORDANCE WITH SECTION 505 OF THE STANDARD SPEC.

DRAWING INDEX

- FP 1 - FISHING PIER SITE PLAN
- FP 2 - FISHING PIER PLAN
- FP 3 - FISHING PIER DETAILS



NO.	REVISIONS	DATE:
	BIDDING DOCUMENTS	10/21/19

FISHING PIER SITE PLAN
 SALMO POND
 DANE COUNTY PARKS DIVISION
 DANE COUNTY, WISCONSIN

JOB NO.
4311.001
PROJECT MGR.
ZRS



SHEET
FP 1

NOTES:

PIER MANUFACTURER IS RESPONSIBLE FOR DESIGN OF THE FLOATING PIER SYSTEM AND COORDINATION WITH THE GENERAL CONTRACTOR TO PROVIDE A COMPLETE SYSTEM WHICH IS FUNCTIONAL THROUGHOUT THE DESIGN WATER LEVEL RANGE.

PIER SHALL BE DESIGNED TO MEET THE PERFORMANCE CRITERIA IN THE SPECIFICATIONS AND SHALL BE AN APPROVED BY THE WISCONSIN DEPT. OF NATURAL RESOURCES FOR MANUFACTURING FLOATING PIERS.

OVERALL PIER DIMENSIONS SHOWN ARE NOMINAL AND MAY VARY SLIGHTLY BASED ON MANUFACTURER'S DETAILS. CONTRACTOR SHALL COORDINATE LAYOUT DIMENSIONS WITH FLOATING PIER DESIGNER. FINAL CONCRETE ABUTMENT DIMENSIONS MUST BE ADJUSTED TO ACCOMMODATE THE MANUFACTURER'S FINAL GANGWAY WIDTH AND HEIGHT OF DECK ABOVE ROLLER.

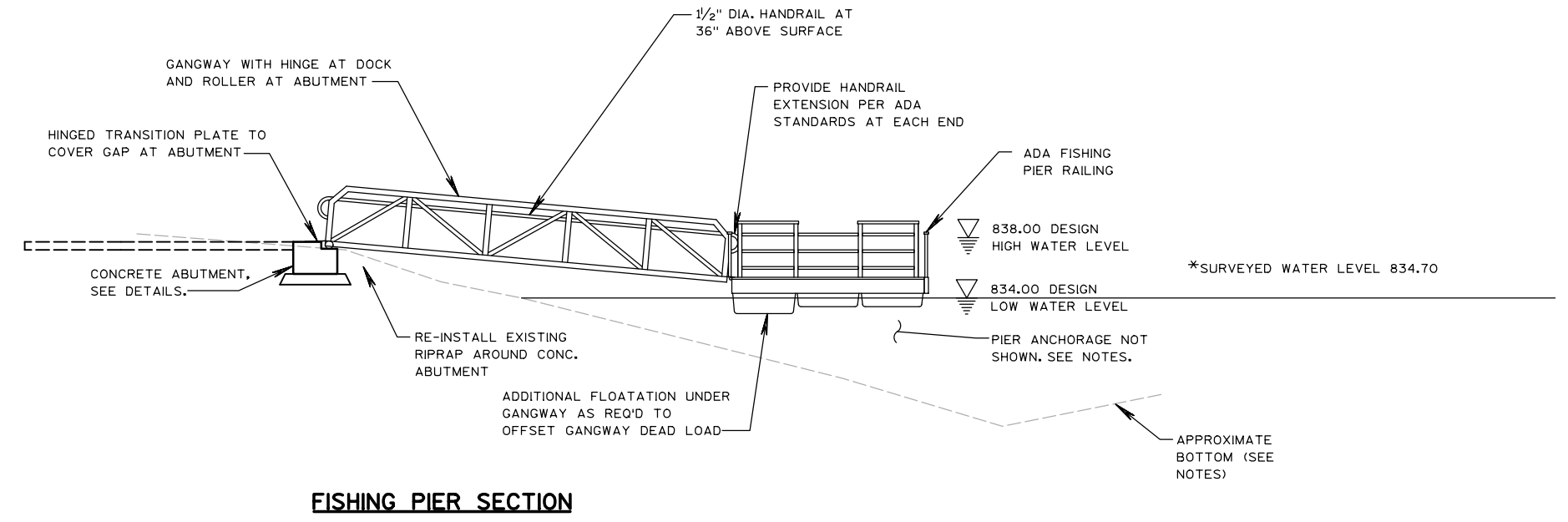
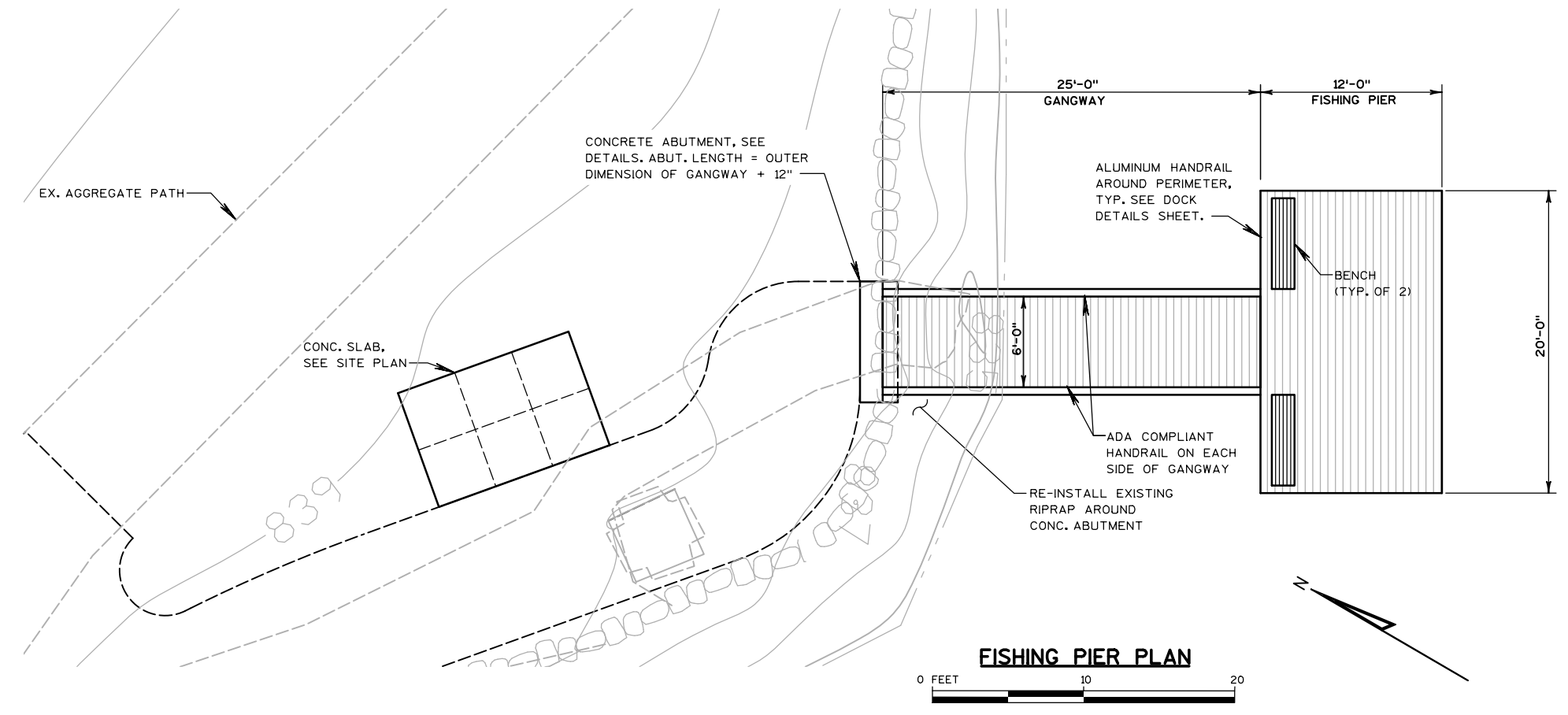
PIER FLOATATION DESIGN SHALL ACCOUNT FOR THE ADDITIONAL DEAD LOAD OF THE GANGWAY AND SHALL MEET THE PERFORMANCE CRITERIA PER THE SPECIFICATIONS.

PIER MANUFACTURER SHALL DESIGN POST AND SLEEVE ANCHORAGE SYSTEM TO ACCOUNT FOR THE FULL RANGE OF WATER LEVELS SHOWN. CONTRACTOR AND DOCK MANUFACTURER SHALL CONFIRM WATER DEPTH AS REQUIRED FOR DESIGN OF ANCHORAGE SYSTEM.

DESIGN FLOATING PIER SYSTEM TO ALLOW FOR SEASONAL REMOVAL BY OWNER. PROVIDE A MINIMUM OF 4 LIFT RINGS ON EACH SECTION OF DOCK SPACED TO PROVIDE A BALANCED LIFT DURING REMOVAL. DESIGN PIER FRAMING SYSTEM TO SUPPORT WEIGHT OF PIER WHEN SUPPORTED BY LIFT RINGS. LIFT RINGS SHALL BE SECURELY ANCHORED TO DOCK FRAMING.

APPROXIMATE WATER DEPTHS BASED ON MEASUREMENTS BY DANE COUNTY ON 7/31/19 ARE AS FOLLOWS:

DISTANCE FROM SHORE (FEET)	WATER DEPTH (FEET)
10	2.5
20	5
30	8
40	6



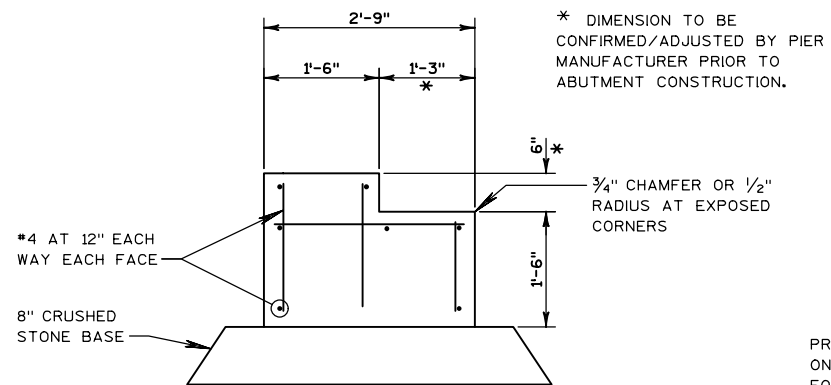
DATE	REVISIONS	NO.
10/21/19	BIDDING DOCUMENTS	

FISHING PIER PLAN
 SALMO POND
 DANE COUNTY PARKS DIVISION
 DANE COUNTY, WISCONSIN

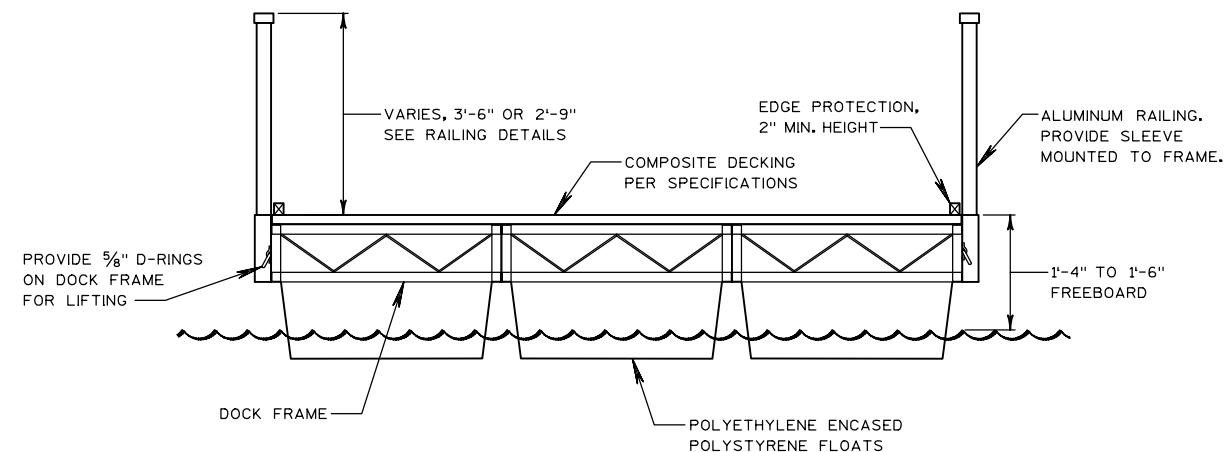
JOB NO.
 4311.001
 PROJECT MGR.
 ZRS



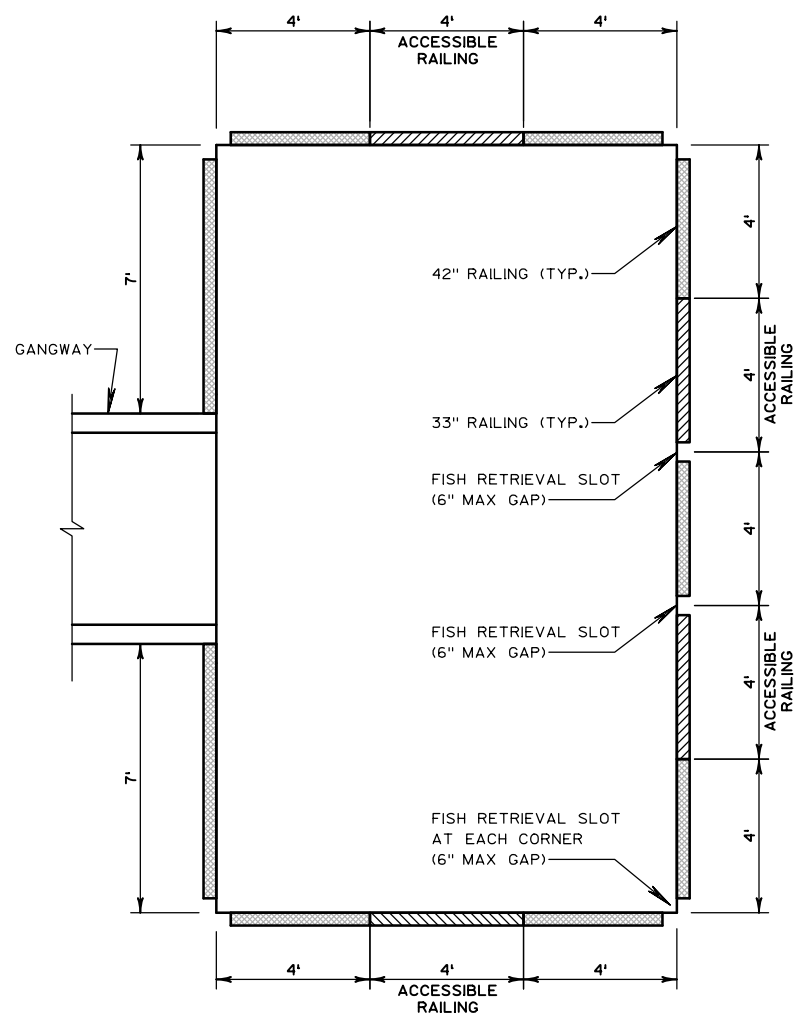
SHEET
 FP 2



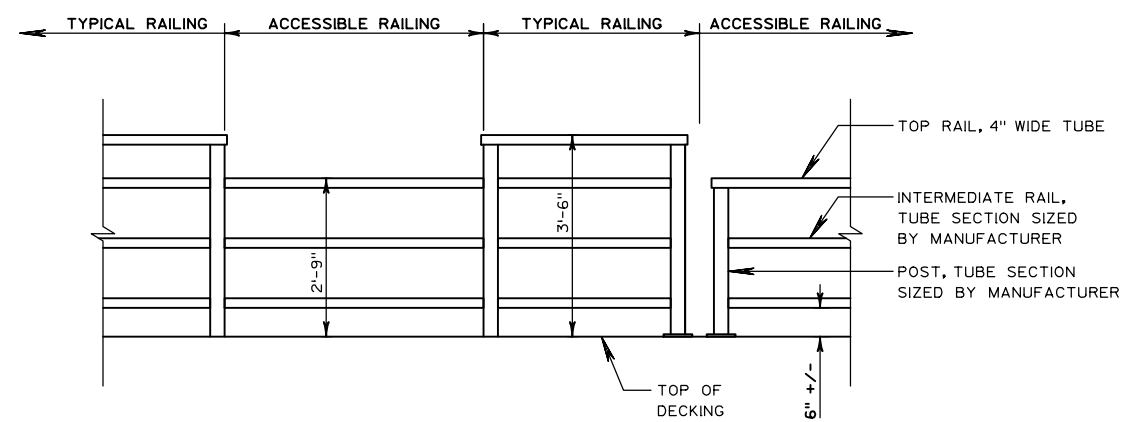
DOCK ABUTMENT
NO SCALE



FISHING PIER TYPICAL SECTION
NO SCALE



RAILING LAYOUT
NO SCALE



RAILING ELEVATION
NO SCALE

RAILING NOTES:

PIER MANUFACTURER SHALL BE RESPONSIBLE FOR FINAL DESIGN OF RAILING PER THE SPECIFICATIONS AND DIMENSIONS SHOWN.

MINOR ADJUSTMENTS TO THE RAILING LAYOUT DIMENSIONS ARE ACCEPTABLE TO FIT THE PIER FRAMING LAYOUT.

RAILING SHALL BE FABRICATED FROM ALUMINUM TUBES.

RAILING SHALL BE SECURELY ANCHORED TO THE PIER FRAME USING SLEEVES. RAILING SECTIONS SHALL BE REMOVABLE.

SHOP DRAWING SUBMITTAL SHALL CLEARLY SHOW THE RAILING LAYOUT AND MOUNTING DETAILS.

NO.	REVISIONS	DATE:
	BIDDING DOCUMENTS	10/27/19

FISHING PIER DETAILS
SALMO POND
DANE COUNTY PARKS DIVISION
DANE COUNTY, WISCONSIN

JOB NO.
4311.001
PROJECT MGR.
ZRS



SHEET
FP 3