

# Growing up in the marsh

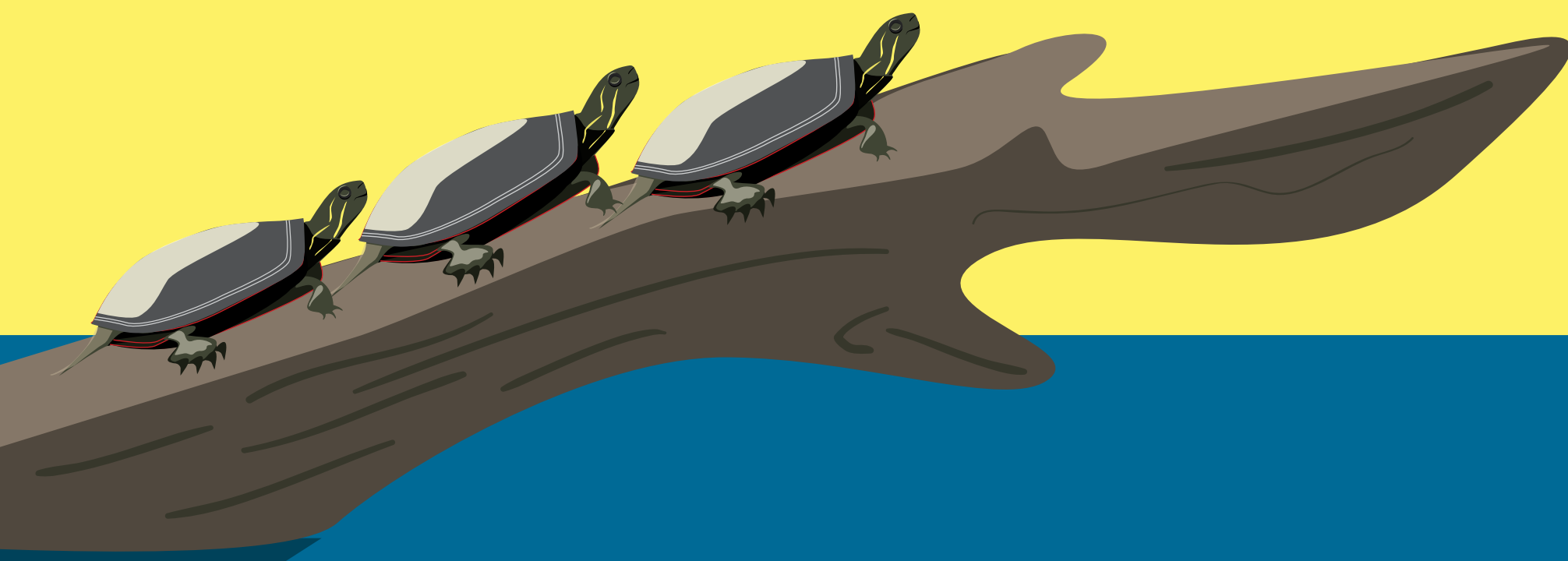
Every spring the marsh comes alive. Fish spawn, frogs and turtles lay eggs, ducks and geese nest and raise lots of young. These babies grow up fast! By fall they're ready to take care of themselves.



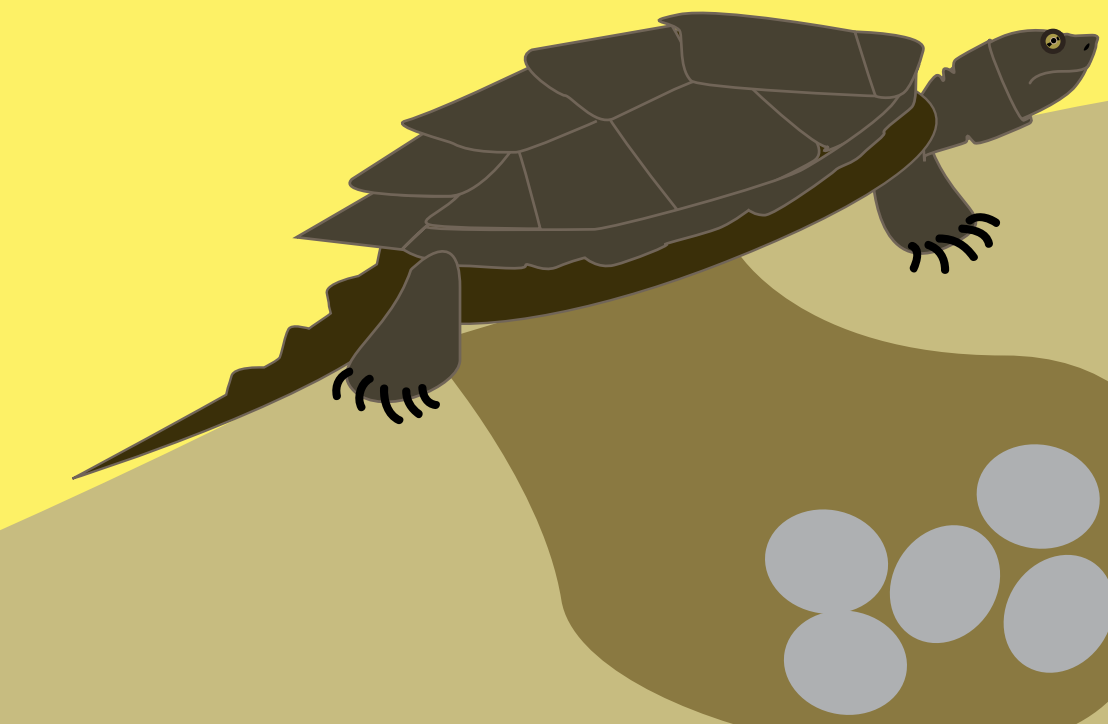
painted turtle

Turtles climb up on a log in the summertime to get nice and hot. The heat helps them grow and store enough energy to survive our cold winters.

Female snapping turtles build nests in early June. They find a sunny spot to lay their eggs because the eggs need to stay warm to hatch. Did you know that the temperature of their eggs affects whether the turtle is male or female?



A snapping turtle can lay between 5 and 40 eggs at a time.

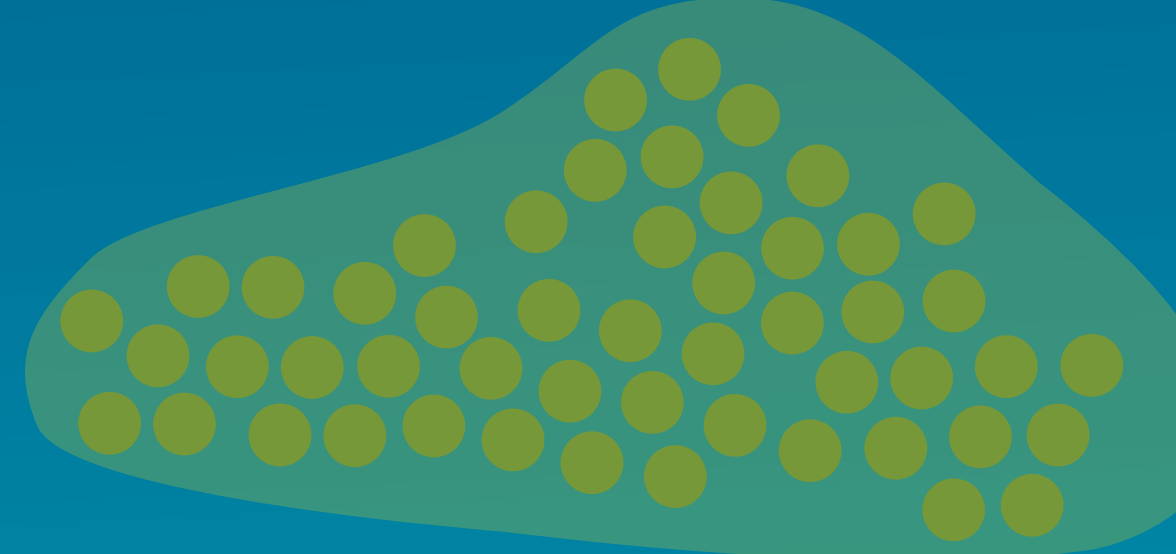


Frogs lay hundreds of eggs every spring in the water.



When the eggs hatch, the frogs emerge as tadpoles and swim in the water while they continue to grow. Tadpoles grow back legs and then front legs and then their tail stops growing.

Soon their lungs develop and when they start to breath air, they're ready to hop on shore.



## PLACES THAT POND AND MARSH ANIMALS BUILD THEIR NESTS:

- POND BOTTOM • FISH
- POND EDGE • FROGS
- MARSH GRASSES • DUCKS
- MUDDY BANKS • TURTLES
- SHRUBS AND TREES • SONGBIRDS

Can you spot any nests or babies in the pond or marsh today?



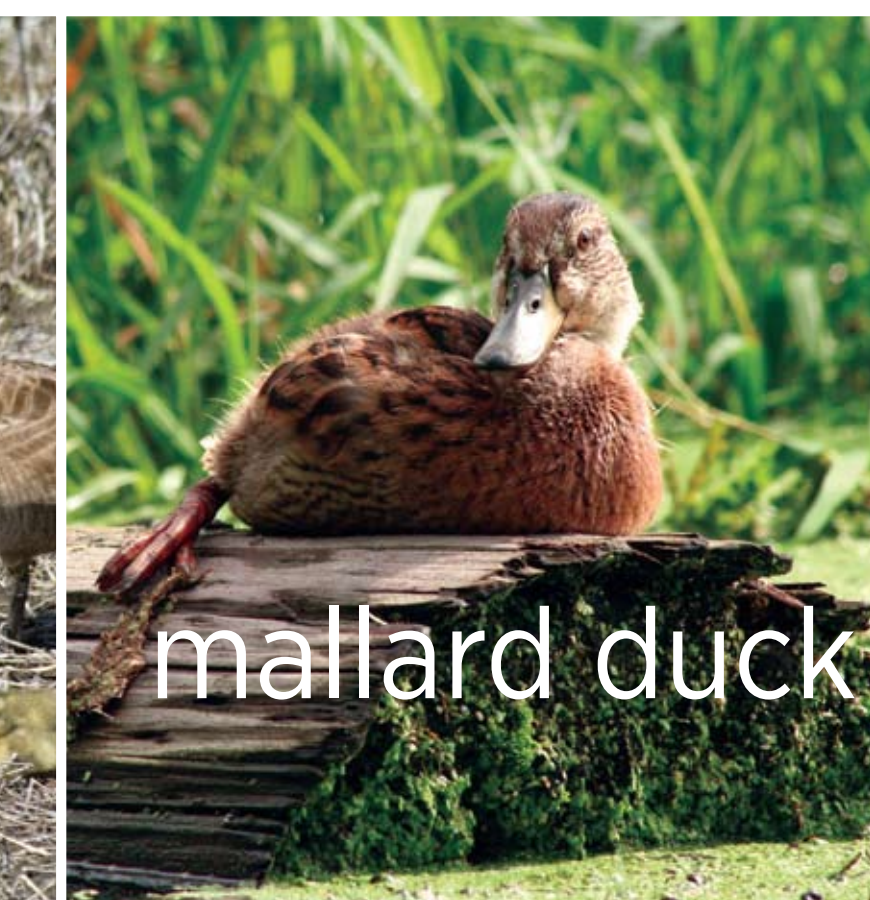
tadpole



snapping turtle



canadian goose



mallard duck



with support from  
DANE COUNTY  
CONSERVATION LEAGUE

Photos courtesy of  
PHILLIP L. BILLINGS  
WWW.PHOTOGRAPHYINOURTIME.COM